

Mosaic Assemblers

MOSAIQUE DE GRÈS CÉRAME
FULLY VITRIFIED UNGLAZED MOSAIC TILES

2 x 2 cm (3,8 mm) • 3/4" x 3/4"



CHY.01

Mosaic Assemblers

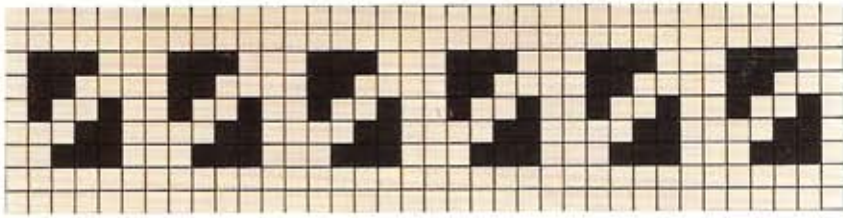
MOSAIQUE DE GRÈS CÉRAME
FULLY VITRIFIED UNGLAZED MOSAIC TILES

2 x 2 cm (3,8 mm) • 3/4" x 3/4"

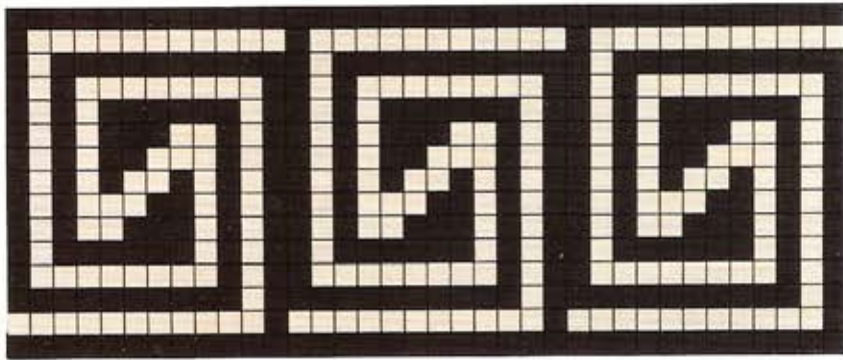


CHY.01

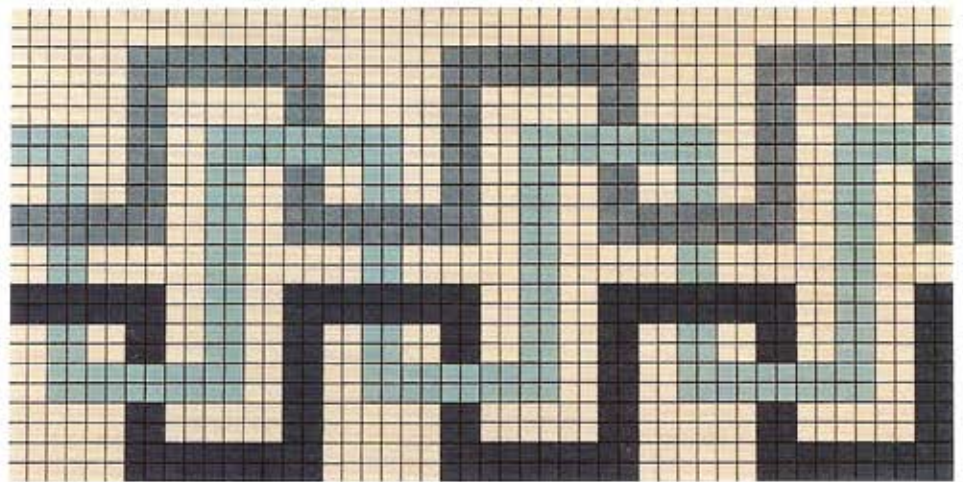
www.mosaicassemblers.com



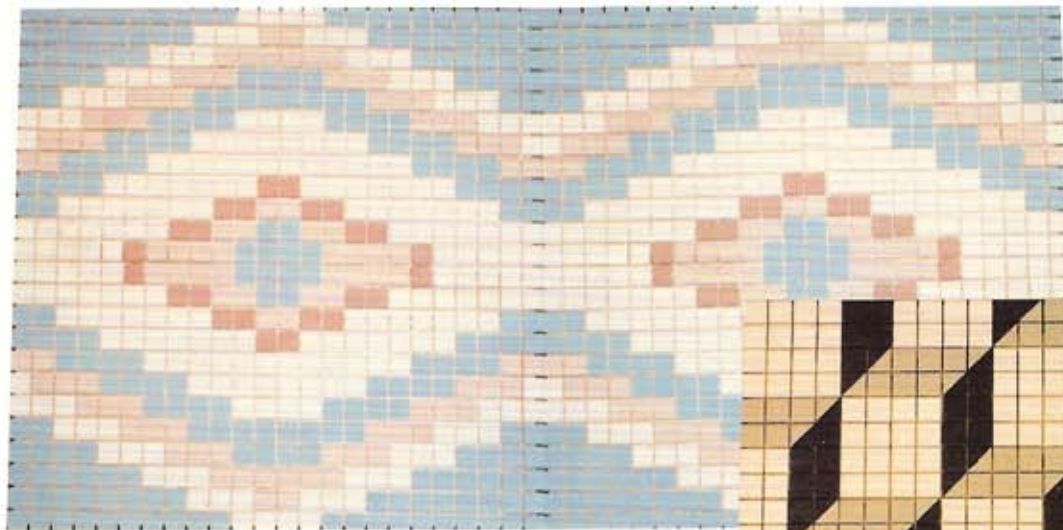
MB.902



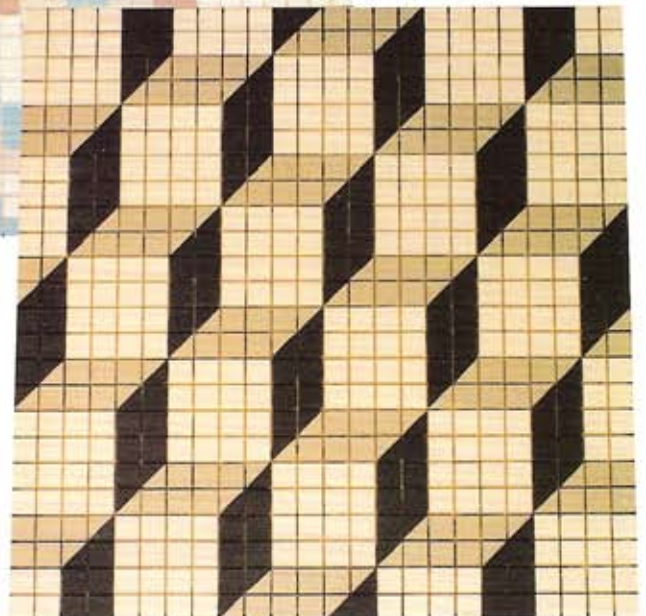
MB.1501



MB.2403



MB.2401



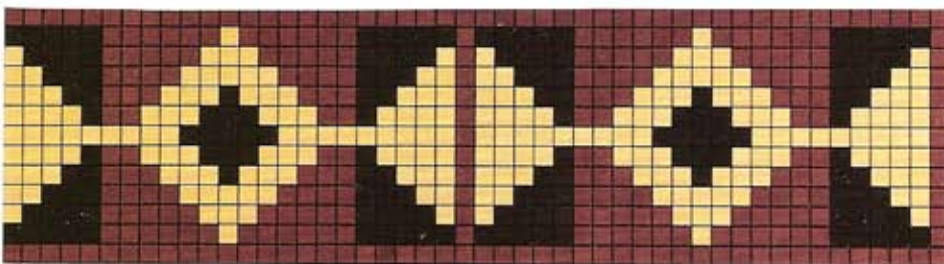
MP.11



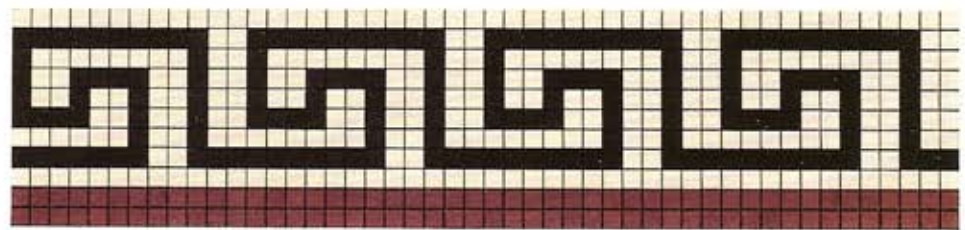
MB.2410



MB.2411



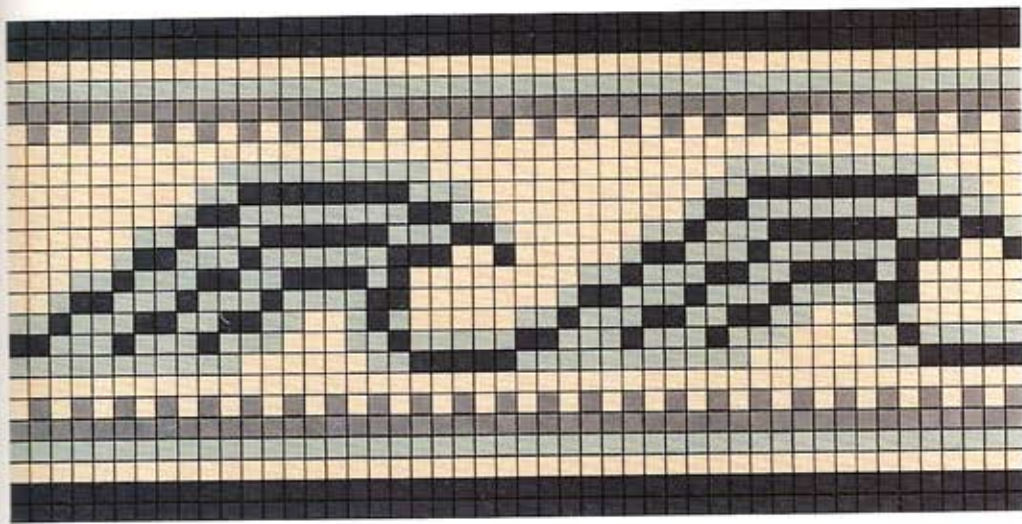
MB.1301



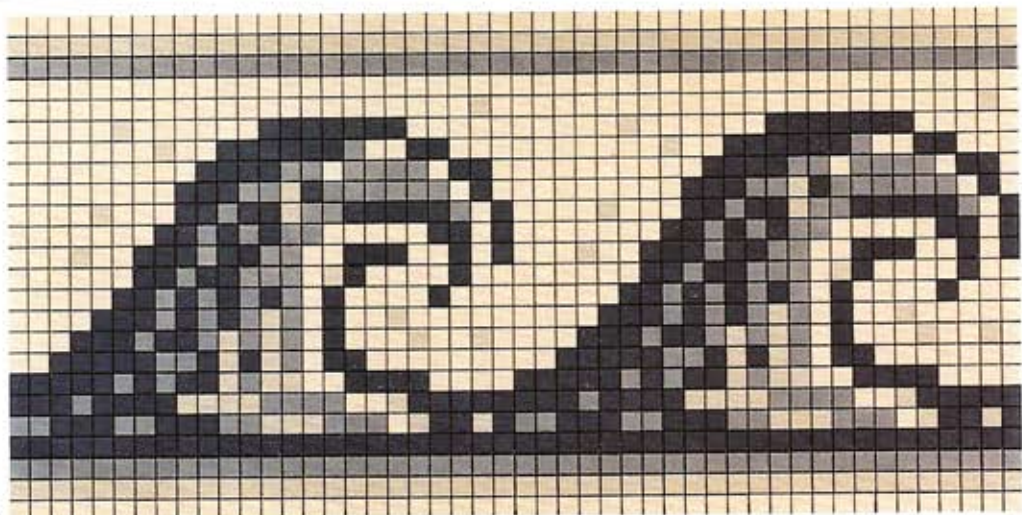
MB.901



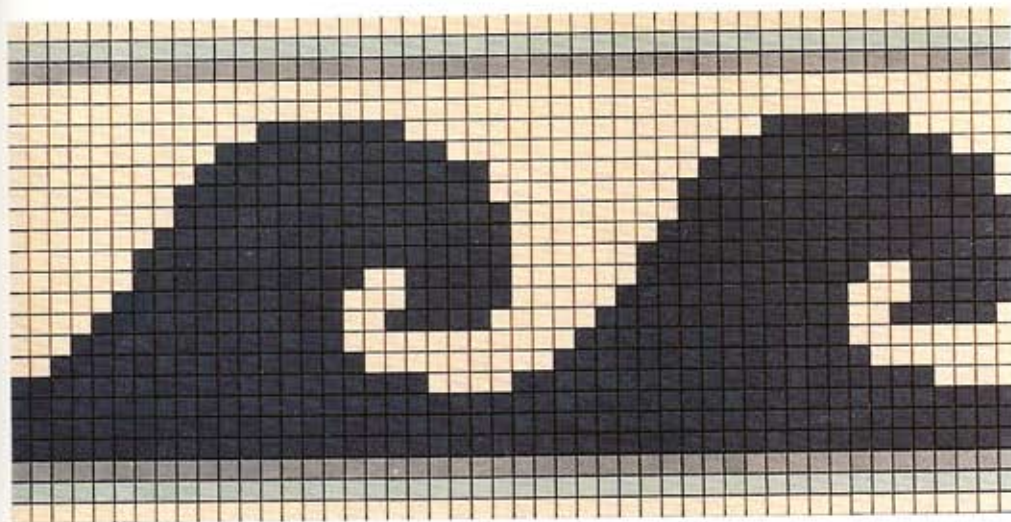
MP.4



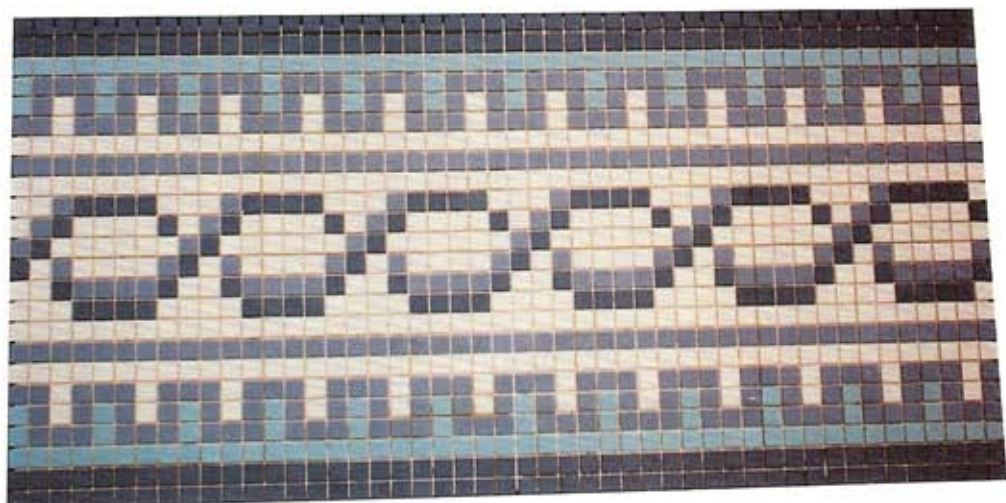
MB.2408



MB.2406



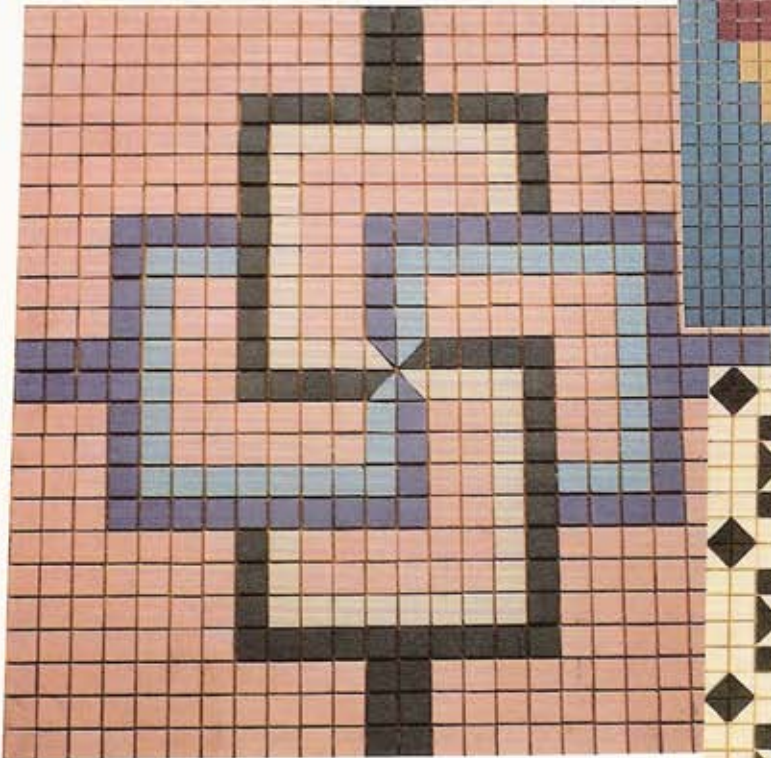
MB.2409



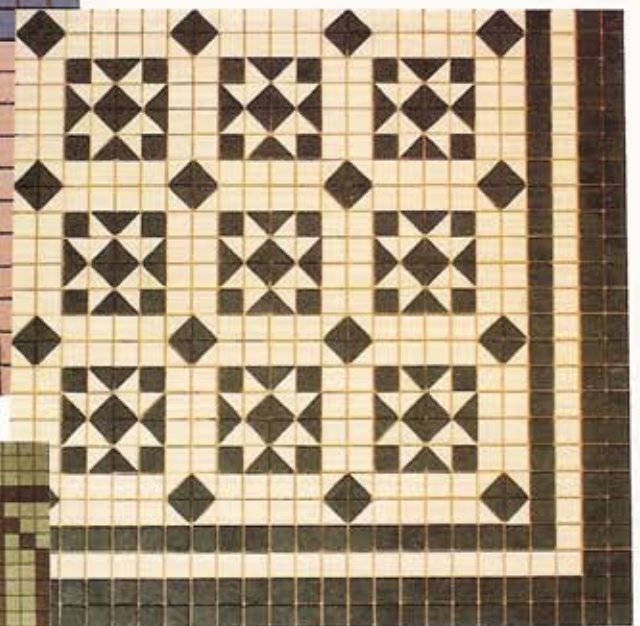
MB.2407



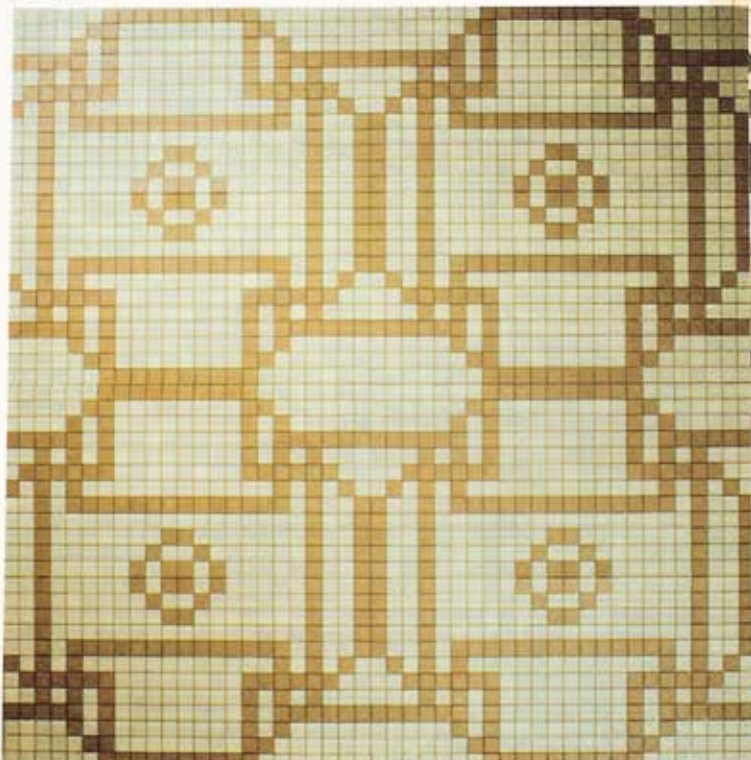
MP.8



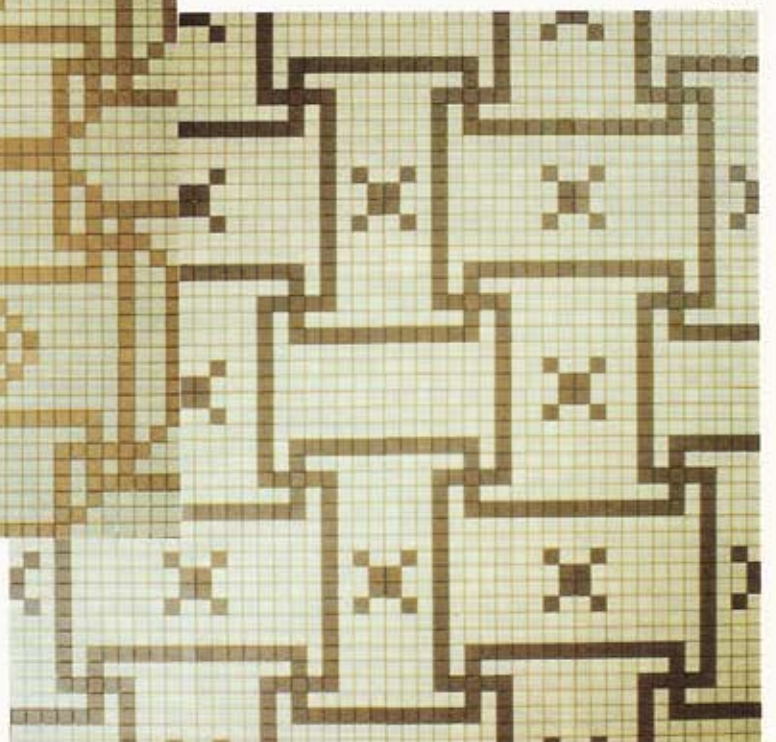
MP.9



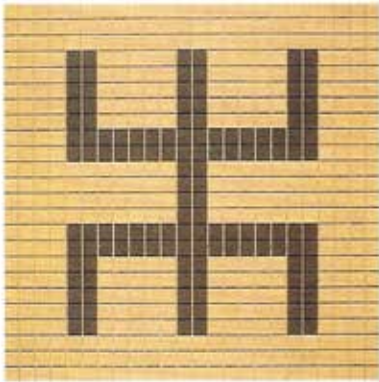
MP.10



MP.7



MP.12



MP.13



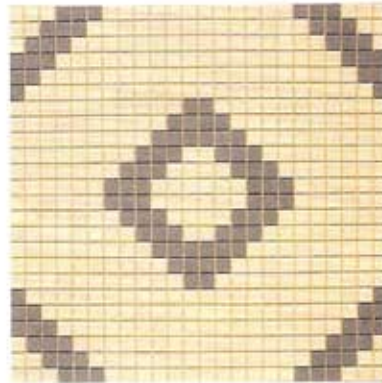
MP.14



MP.15



MP.16



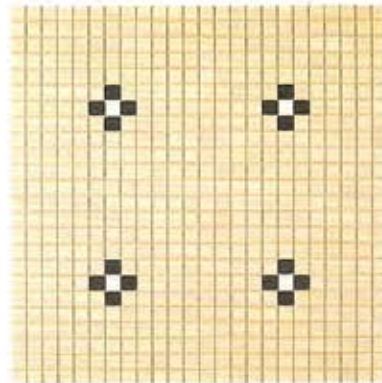
MP.17



MP.18



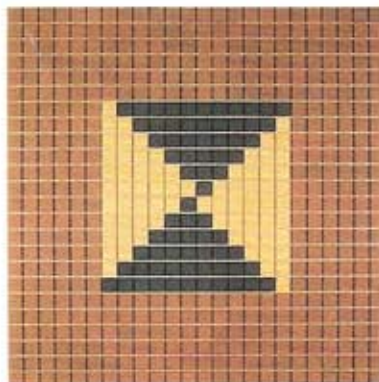
MP.19



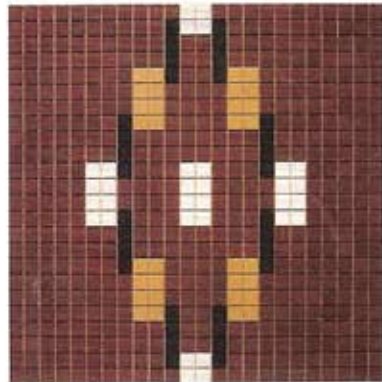
MP.20



MP.21



MP.22



MP.23



MP.24